

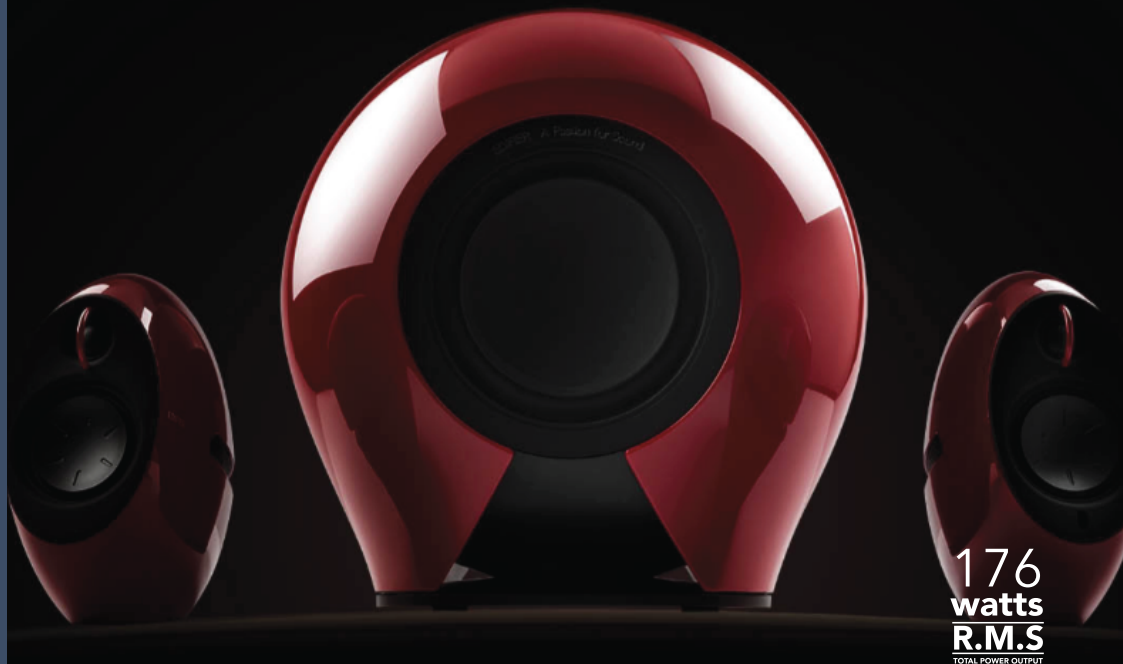
# EDIFIER®

## Luna E e235

THX certified Active Speaker System

### AWARD-WINNING 176 WATTS OF QUALITY SOUND

Bridging the world of design thinking and engineering with the latest in technology, Edifier introduces the Luna E e235 THX-certified active speaker system to the world of multimedia, movies and gaming. At a staggering 176 watts of output sound, this system comes in signature Edifier red from the Luna range as well as classic black.



#### Features

- THX certified home entertainment system with wireless subwoofer
- Bluetooth aptX technology
- Optical input ideal for digital audio devices including Playstation® and Xbox® for gaming
- 5.8GHz wireless active subwoofer with two 8" speakers delivers 100W RMS power
- 2-way 38W RMS bi-amplified satellite speakers with natural silk dome tweeters and passive radiators
- Total power: 176W RMS
- Built-in Digital Signal Processing (DSP) and Dynamic Range Control (DRC), and 3D sound processing
- Touch sensitive controls for volume, track change and power

#### Specifications

Power output	: RMS 16W × 2 + 22W × 2 + 100W
Signal to noise ratio	: ≥85dBA
Input sensitivity	: AUX: R/L: 550±50mV SW: 800±50mV Optical: R/L: 300±50mFFS SW: 250±50mFFS Bluetooth: R/L: 300±50mFFS SW: 250±50mFFS
Input type	: Optical/AUX/Bluetooth
Bass unit	: 8 inch (210mm)
Mid-range unit	: 3 inch (82mm)
Treble unit	: Φ19mm silk dome
EAN code	: 6923520264810 (Red) 6923520265404 (Black)



THX and the THX logo are trademarks of THX Ltd. that are registered in the U.S. and other jurisdictions. All rights reserved.



© 2013 CSR plc and its group companies. The aptX® mark and the aptX logo are trade marks of CSR plc or one of its group companies and may be registered in one or more jurisdictions.\*

Disclaimer: All specifications are subject to change without notice

[www.edifier.com](http://www.edifier.com)

A Passion for Sound