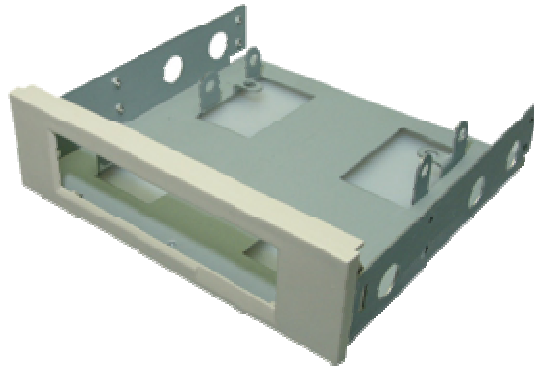


Floppy disk mounting frame for 5,25 AD0003



Overview: Standardized mounting frame for all desktop, AT and ATX housings. The frame is mounted in the 5.25 inch bay using the supplied screws. Now you can integrate FDD floppy, ZIP or LS drives with a 3.5 inch format. The appropriate cover in standard light gray ensures an attractive design and protects against dust and dirt. A set consists of 2 pieces.

Features:

- Mounting frame for FDD Floppy Drives
- Metal base frame
- Sturdy plastic frame
- Standardized for all desktop, AT and ATX cases with 5.25 inch bay
- Standardized 3.5 inch frame
- 10 mounting options
- Suitable for ZIP and LS drives
- Mounting screws included
- ROHS compliant, CE
- Color: Light grey

More Information:

Product link : www.logilink.com