



Art No. MR0007

## SATA HDD Mobile Rack For 2-Bay 2.5" (6.35cm) HDD Enclosure

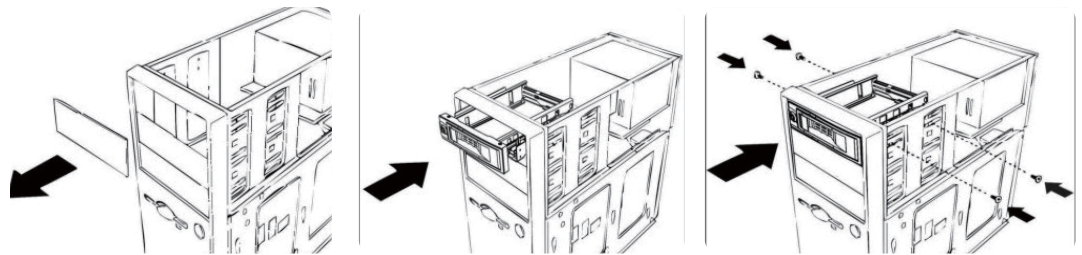
### Specification:

- Compatible with SATA I/II specification
- Stylish front panel design with excellent ventilation
- Fit to 5.25 inches drive standard bay of PC Case
- 2 Bays for 2.5" SATA I/II Hard Drives
- No driver or software needed
- Tool Free Hard Disk installation
- Interface: Supports SATA (3.0Gb/s)
- Fits all 2.5" SATA hard disk
- Supports hot swap

### Requirements:

An available slot on the computer case

### Install HDD-ROM:



1. Remove the slot cover of an empty 5.25" floppy bay.
2. Carefully insert the HDD-ROM into the bay and push it inward until the HDD-ROM's screw holes are aligned with the hole of the bay.
3. The HDD-ROM comes with screws, and uses 2 screws on each side to securely hold the device.

\* The specifications and pictures are subject to change without notice.  
\*All trade names referenced are the registered namework of their respective owners.



RoHS  
compliant

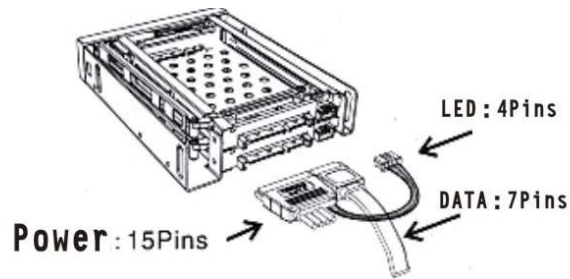




Art No. MR0007

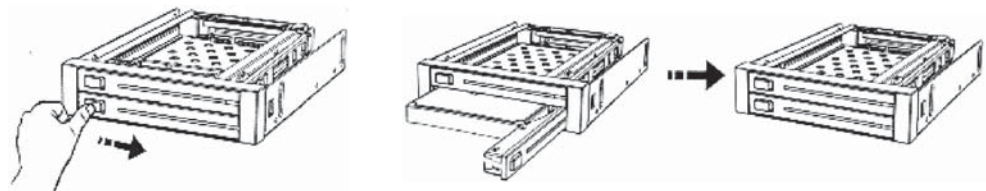
## SATA HDD Mobile Rack For 2-Bay 2.5" (6.35cm) HDD Enclosure

Connect the HDD-ROM Cable:



1. Insert the SATA 15P conn.in to the HDD - ROM's 15P conn. Connect the big power 4P connector to the PC's 4P power plug, and the small 4P LED wire connector to the 4P led port at the back of HDD-ROM.
2. Insert one end of the SATA 7P cable to HDD-ROM, and the other end (7P) to either the mother board or the SATA RAID card.

Install HDD Drive into HDD-ROM:



1. Pull the two keys of HDD- ROM gently from left to right to eject the panel.
2. Put the 2.5" HDD into the HDD-ROM and close the front panel.



Art No. MR0007

## SATA HDD Mobile Rack For 2-Bay 2.5''(6.35cm) HDD Enclosure

### Package Contents:

- 1 x SATA HDD Mobile Rack
- 2 x SATA Cables
- 2 x SATA Power Cables
- 4 x Screws
- 1 x User Manual

### Packaging Information:

- Packing Dimension: mm
- Packing Weight: kg
- Carton Dimension: mm
- Carton Q'ty: pcs
- Carton Weight: kg



\* The specifications and pictures are subject to change without notice.  
\*All trade names referenced are the registered namework of their respective owners.



RoHS  
compliant



Made in China