

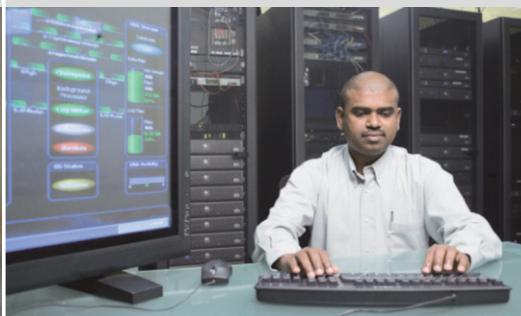


24-Port Unmanaged Gigabit Ethernet Switch

Expand your networking



Store-and-forward



Easy to use



BRIEF INTRODUCTION ❖❖

TEG1024G is a 24-port 1U rack-mountable Gigabit switch. It supports auto MDI/MDIX and store-and-forward switching. TEG1024G has a 48Gbps backplane bandwidth. It is ready for deployment in server rooms or offices with a need to keep serious network traffic flowing. This switch let your network up to 24 Ethernet-enabled devices at speed up to 1000Mbps. This desktop switch supports Quality of Service feature that helps reduce jitter and lag with VOIP and games! "Plug and Play" function assists you to set up easily.

PRODUCT FEATURES ❖❖

- ▶ Complies with IEEE 802.3x full-duplex and flow control
- ▶ NMA auto-negotiation, Non-blocking, Internal power supply
- ▶ Provides 24 auto-negotiation 10/100/1,000Mbps LAN ports
- ▶ Integrated 8,000 MAC address table
- ▶ Standard 19" rack-mountable metal case

WHAT THIS PRODUCT DOES

To expand your gigabit networking up to 23 more PCs

BENEFITS

- ❖ Simple solution for expanding your networking;
- ❖ Idea for VOIP and games
- ❖ Space saving design and installation options
- ❖ Easy to install and use
- ❖ High speed and excellent performance

TECHNICAL SPECIFICATIONS

Protocols and Standards	IEEE802.3, IEEE802.3u and IEEE802.3ab
Interface	24 10/100/1000Mbps RJ45 Ports,
Power Supply	Internal Switch Power, AC100~240V, 50/60Hz input
MAC Address Table Size	8K
Packet Buffer	2Mb
Backplane Bandwidth	48Gbps
Transmission Method	Store-and-Forward
Transmission Media	10Base-T: Cat.3 or 3e UTP; 100Base-TX: Cat.5 UTP; 1000Base-T: Cat.5e UTP;
Operating Temperature	32 to 104°F (0 to 40°C)
Operating Humidity	10 to 90% Noncondensing
Storage Temperature	-40 to 158°F (-40 to 70°C)
Storage Humidity	5 to 90% Noncondensing
Dimension (WxDxH)	437mmx177mmx43mm (17.2"x7.0"x1.7")
Housing Material	Metal
Gross Weight	2.69Kg
Certificate	CE, RoHS

PACKAGE CONTENTS

- ❖ TEG1024G 24-Port Unmanaged Gigabit Ethernet Switch
- ❖ User Manual
- ❖ Quick Installaiton Guide
- ❖ One power cord, two mounting ears, eight screws and four

MINIMUM REQUIREMENTS

- ❖ Internet Explorer 5.5 or Firefox 1.0
- ❖ Network Adapter

Model No.: TEG1024G

● **Obligation-free statement**

The maximum performance for wireless is derived from IEEE Standard 802.11 specifications. Actual performance can vary, including lower wireless network capacity, data throughput rate, range and coverage. Performance depends on many factors, conditions and variables, including distance from the access point, volume of network traffic, building materials and construction, operating system used, mix of wireless products used, interference and other adverse conditions. Check the product package and contents for specific features supported. Specifications are subject to change without notice.

● **Copyright statement**

Tenda is the registered trademark of Shenzhen Tenda Technology Co., LTD in CHINA and certain other countries. Copyright © 2007 Shenzhen Tenda Technology Co., LTD. All rights reserved. Other brands and product name are trademarks or registered trademarks of their respective holders.

● **Contact us**

Shenzhen Tenda Technology Co., Ltd.
 Address: Tenda Industrial Park, No. 34-1, Shilong Rd., Shiyong Town, Bao'an District, Shenzhen, P.R. China 518108
 Tel: 0086.755.2765.7180 Fax: 0086.755.2765.7178
 E-mail: sales@tenda.com.cn Http: www.tenda.cn